



M3 Class A and I low-floor citybus

Altas Novus City V7

100% ELECTRIC



Motor
200 kW



Batteries
140 kWh



Charging
120 kW



Range
309 km
SORT 2

Dimensions and weight

Lenght (mm)	7490 or 7510
Width (mm)	2120
Height (mm)	3100
Wheelbase (mm)	4100
Permitted GVW (kg)	9900
Entrance door width (mm)	1200
Entrance step height from the ground (mm)	330/250*
Internal height (low-floor area) (mm)	2180

Interior

Driver seat producer	ISRI
----------------------	------

Electrical system

System voltage	24 V
----------------	------

Driveline

Suspension	Full air suspension
Electric driveline producer	Dana TM4
Drivetrain	Direct shaft to rear axle
Motor type	Permanent magnet synchronous
Max motor power	200
Max torque (Nm)	2450
Max speed (km/h)	85
Energy consumption (kWh/100 km) SORT2	38.5
Range (km) SORT2	309
Brake system	Full air ABS, ASR, ESP, EBS dual circuit (Knorr-Bremse)
Parking brake	Air actuated, operating on rear axle

Batteries

Battery technology	LFP (CATL)
Battery capacity (kWh)	140 (4x35)
Nominal voltage (V)	600
Fast charging DC power (kW)	120 (CCS2)

Warranty

Battery pack standard warranty	8 year / 500.000 km**
Vehicle standard warranty	5 year / 300.000 km

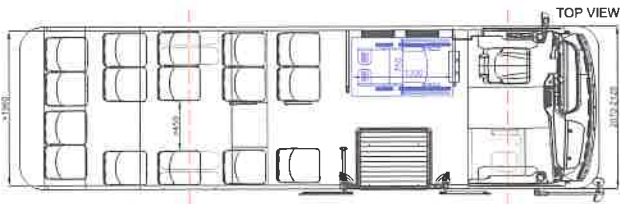
Heating and air conditioning

Interior air conditioning / heating (kW)	23 / 9 PTC (Valeo)
Interior electric heater (kW)	9***
Diesel heating system (HVO) with sidewall heaters (kW)	12*** 18 litres fuel tank

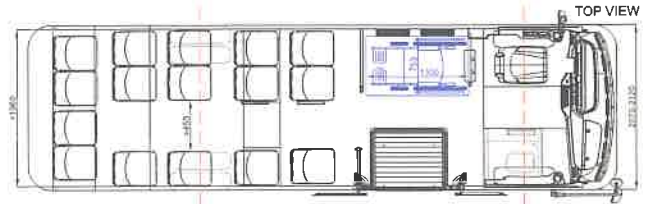
*with kneeling
**with minimum 70% retention of Battery capacity over the warranty period
***optional equipment



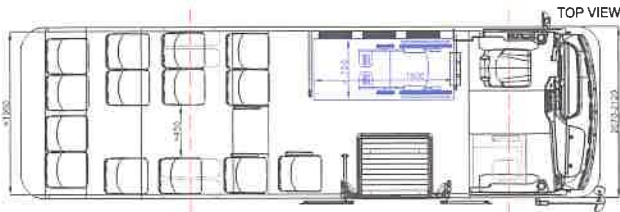
V701 I Class



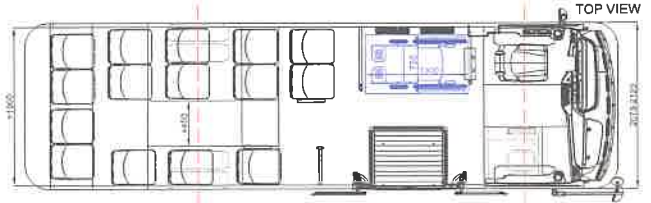
V704 A Class



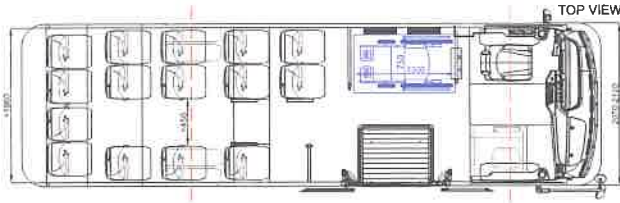
V702 I Class*



V705 A Class*



V703 I Class



V706 A Class*



Scheme no.	No. of seats	No. of flap seats	Standing places	Wheelchair places
V701	16	0	14	1
	16	2	14	0
	16	0	18	0
V702	14	0	16	1
	14	3	14	0
	14	0	21	0
V703	15	0	15	1
	15	2	16	0
	15	0	20	0

Scheme no.	No. of seats	No. of flap seats	Standing places	Wheelchair places
V704	16	0	5	1
	16	2	4	0
	16	0	6	0
V705	15	0	6	1
	15	2	5	0
	15	0	7	0
V706	15	0	6	1
	15	2	5	0
	15	0	7	0

*fulfill Bus Nordic requirements
 **no. of places depend on specification